

Creating a scatter plot with XLSTAT

[demoScatter.xls](#)

Dataset to create a scatter plot

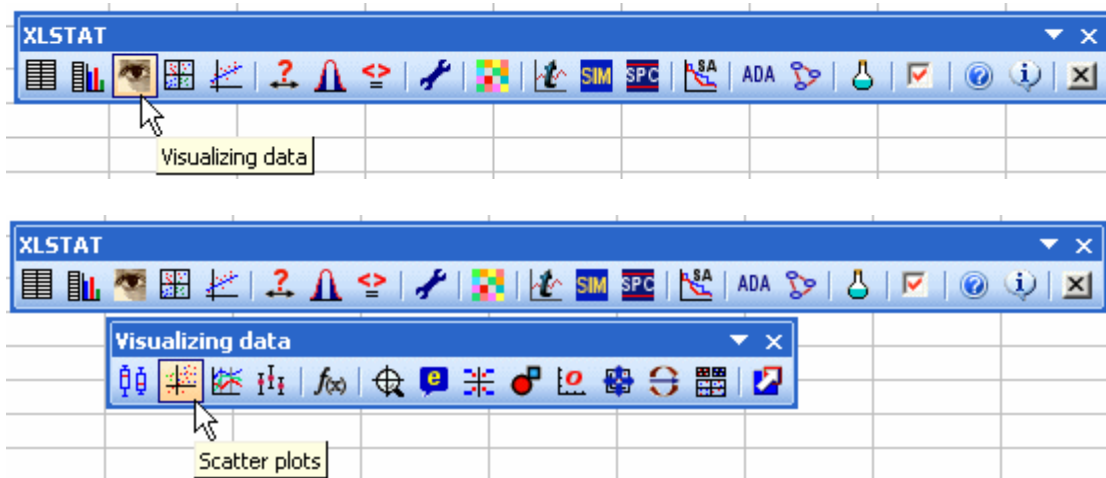
An Excel sheet with both the data and the results can be downloaded by clicking [here](#).

The data correspond to a small group of patients that have been on a specific diet. Their doctor has recorded their Weight before the treatment (kg), how much weight they've lost (kg), if they are satisfied or not with the diet effect, and their "Age".

Our goal is here to visualize the results while keeping as much information as possible.

Setting up a scatter plot

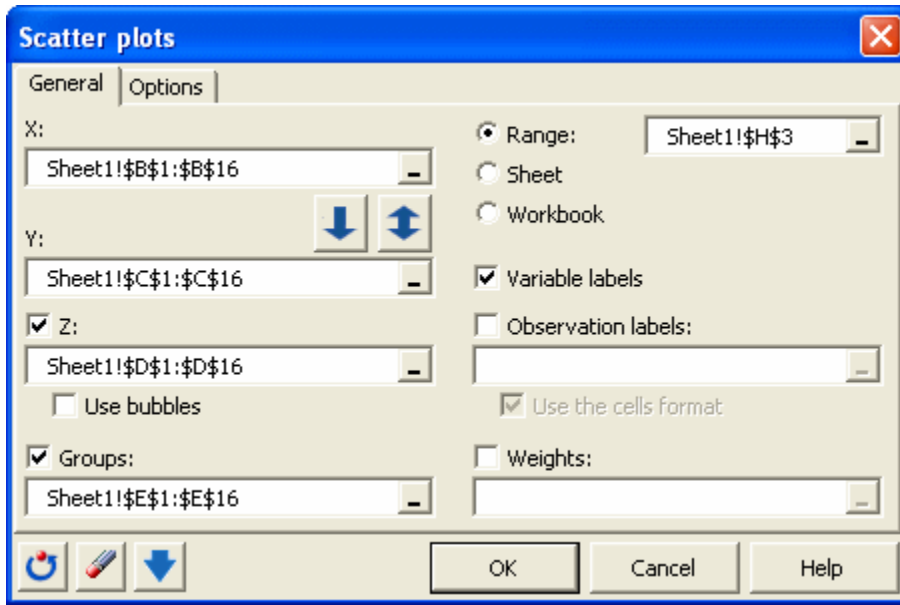
Once XLSTAT-Pro is activated, select the **XLSTAT / Visualizing data / Scatter Plot** command, or click on the corresponding button of the **Visualizing Data** toolbar (see below).



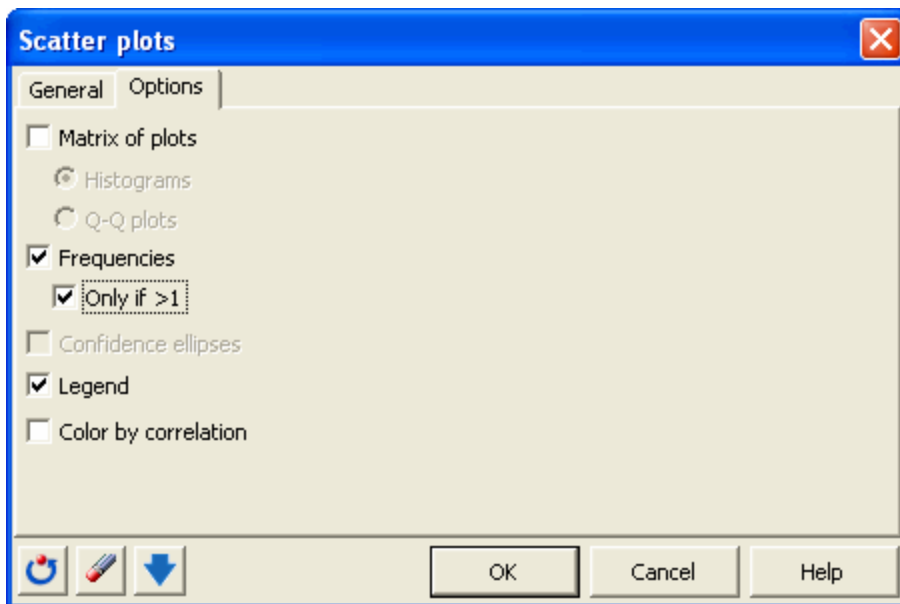
Once you have clicked on the button, the **Scatter Plot** dialog box appears.

Select the data on the Excel sheet as following:

- X: Weight;
- Y: Weight loss;
- Z: Age;
- Groups: Satisfied.

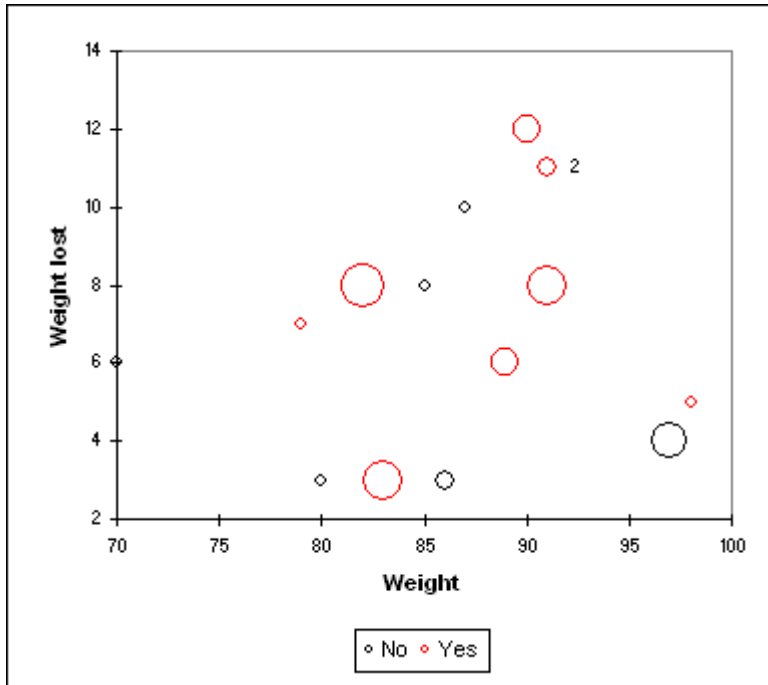


*Note that the **Frequencies** and **Only if >1** options have been activated because we want to know if two or more points are superimposed if there is such as case.*



Interpreting a scatter plot

Then, after you have clicked on the **OK** button, a chart is displayed on the sheet starting at H3 (because this cell was selected in the Range option for outputs).



Note 1: for one of the observations a label has been added. This tells us that two observations are superimposed.

Note 2: the observations labels haven't been used on the chart because the "Observations labels" hasn't been unchecked.

Watch the following video to see how the settings are done.

http://www.youtube.com/watch?feature=player_embedded&v=H83G6bZtk1Q