

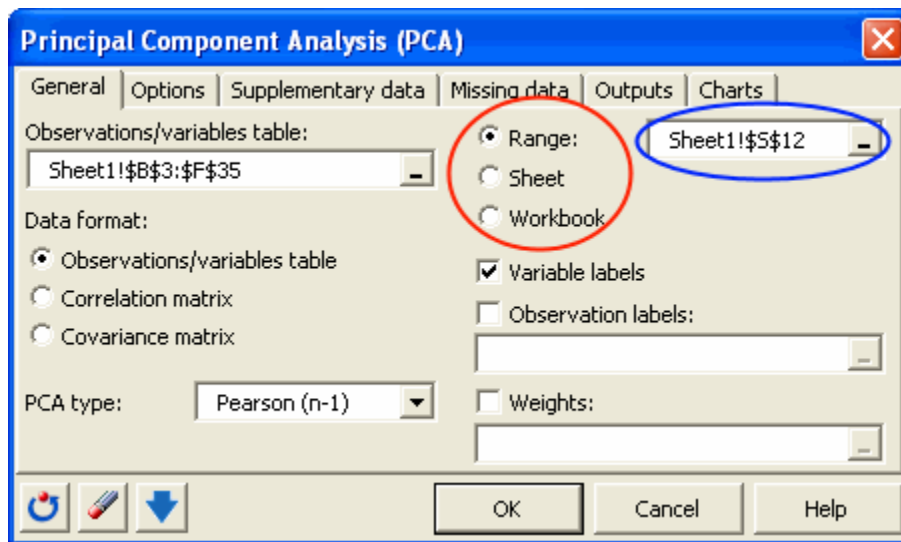
# Choosing the way the results are displayed

## Choosing the display of the results in the analysis' dialog boxes

In each dialog box, XLSTAT offers three possibilities for displaying the results:

- **Range:** the results are displayed starting from a cell that will be the upper left corner of the results report,
- **Sheet:** the results are displayed on a new Excel sheet, generated by XLSTAT,
- **Workbook:** the results are displayed on a new workbook created by XLSTAT.

For example, this is how the three options are displayed (red circle) in the PCA (Principal Component Analysis) dialog box (the display is the same for all dialog boxes):



If you choose the **Range** option, you need to select with the mouse in the corresponding field (blue circle) the cell that corresponds to the upper left corner of the results report.

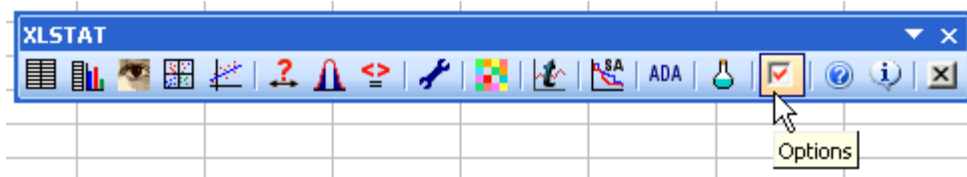
If you choose the **Sheet** option, several possibilities are offered to you in the **Options** panel.

*Notes:*

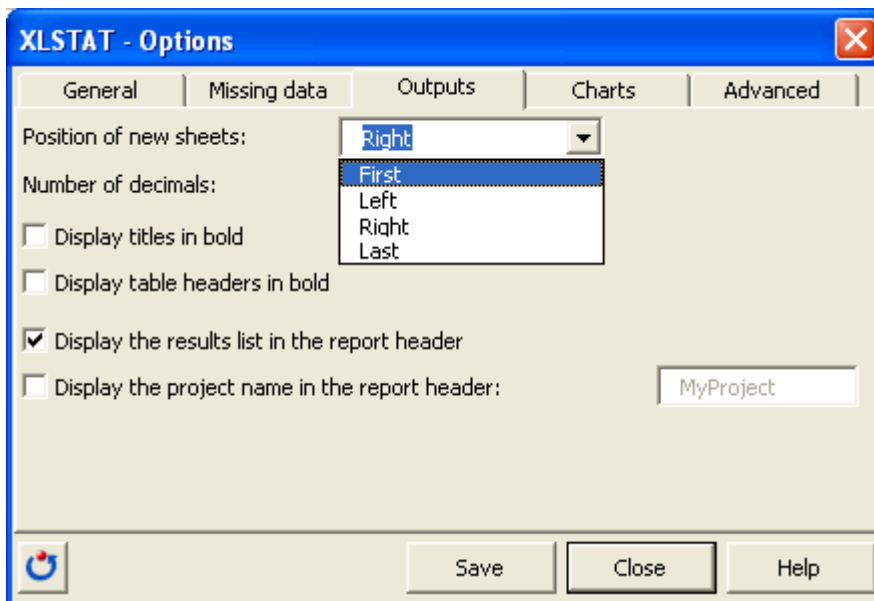
- *If you choose the **Sheet** option, XLSTAT gives the name of the method to the results sheet. For example, if you are running a PCA, the results sheet is named "PCA". If a PCA sheet is already present in the workbook, XLSTAT will name the sheet "PCAx", where x is the first integer greater than 1 such that the "PCAx" sheet does not exist in the workbook yet.*
- *The **Workbook** option is recommended if you are analyzing large volumes of data.*

## Managing the Sheet option form the Options panel

To access to the **Options** panel, click on the corresponding button of the XLSTAT toolbar (see below), or select the corresponding command in the XLSTAT menu.



Then click on the **Outputs** tab, where the display options are available.



You can now set the **Position of the results sheet**:

- First sheet in the workbook: XLSTAT inserts the results sheet at the beginning of the workbook.
- Last sheet in the workbook: XLSTAT inserts the results sheet at the end of the workbook.
- Before the data sheet: XLSTAT inserts the results sheet just before the sheet where the data are stored.
- After the data sheet: XLSTAT inserts the results sheet just after the sheet where the data are stored.