

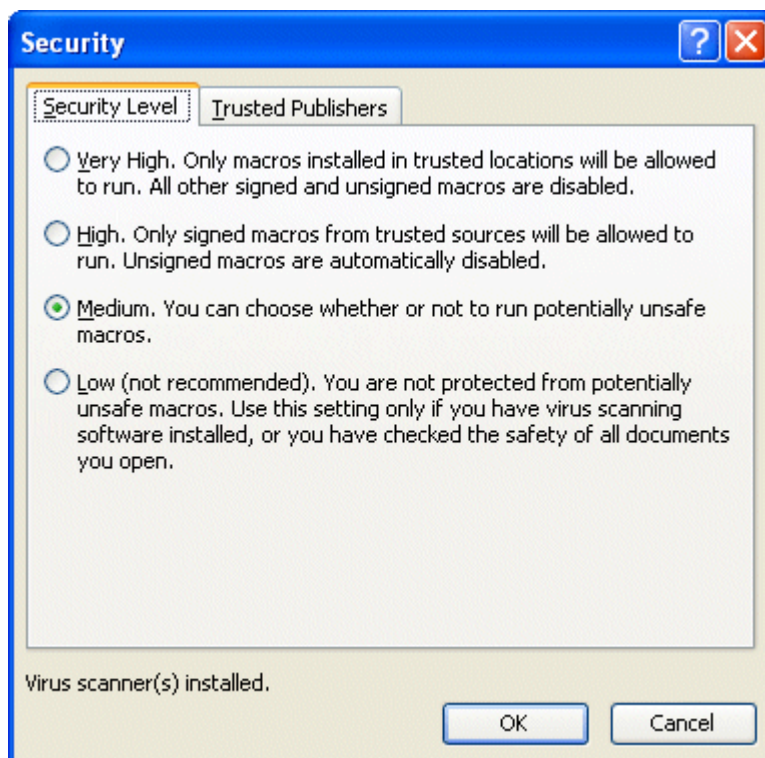
Running XLSTAT the first time (Excel 2004, Excel 2003 and earlier versions)

In order to get XLSTAT to run, you will need, except for Excel X and Excel 2004, to set the Macros security level to Medium so that XLSTAT can run.

Here is how to proceed on Excel 97 to Excel 2003.

Enable the Macro

Use the menu Tools/Macros/Security of Excel



Updating Excel and installing XLSTAT

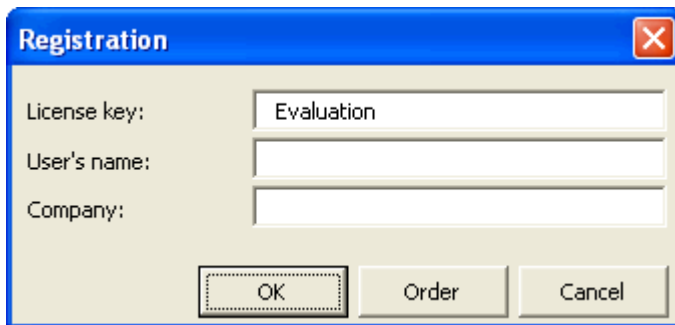
It is also recommended that you make sure that your Excel version is up to date. Microsoft publishes free patches on a regular basis that improve the reliability and stability of the software. To upgrade your Excel version, go to: <http://office.microsoft.com/officeupdate>.


To install XLSTAT, you should use an account that has administrator rights on the machine. If there are several accounts on the machine, the administrator should install XLSTAT using the "Custom" option and run XLSTAT once from his account to enter the license key.

Running XLSTAT

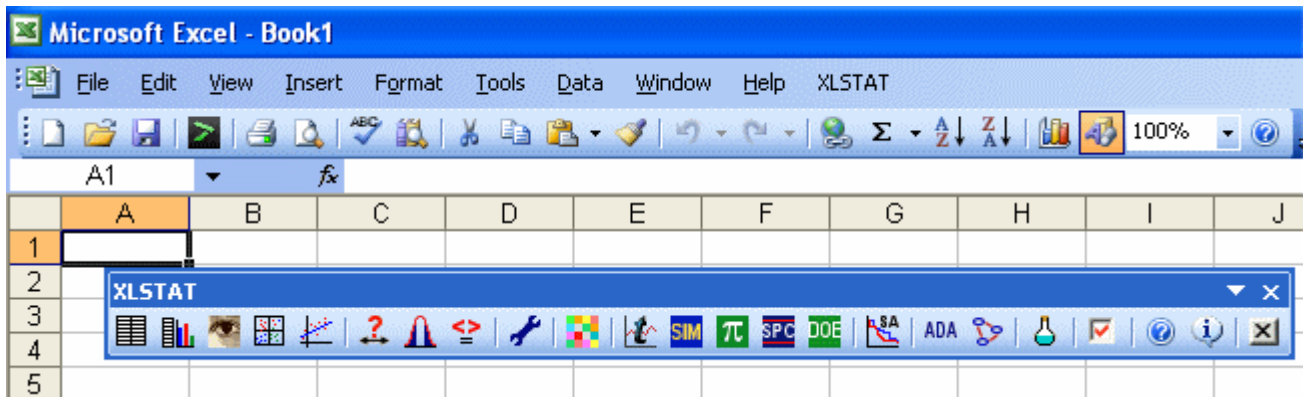
To run XLSTAT for the first time, you can either choose the option to start XLSTAT after the installation procedure, use the Windows Start/Programs/Addinsoft/XLSTAT command, use the XLSTAT shortcut on your desktop, or launch Excel, then open the XLSTAT.xla file using the Excel open command.

XLSTAT will then prompt you for your license number (see below). If you do not have one yet (if, for instance, you've only downloaded the trial version of XLSTAT), please enter "Evaluation" and click "OK".



If you are using XLSTAT for the first time, XLSTAT will add a new button  in the Excel standard toolbar. The button can be used to open XLSTAT when you are using Excel, and can be removed if you wish. This button can also be used to close XLSTAT.

After completing this procedure, the XLSTAT toolbar and the XLSTAT menu will be added to Excel (see image below). Both the toolbar and the menu allow the user to access all XLSTAT functionalities.



The XLSTAT toolbar can be used to access sub-toolbars. By leaving the cursor on a button, you can see the corresponding function. By clicking on it, you activate the dialog box corresponding to the selected function.

